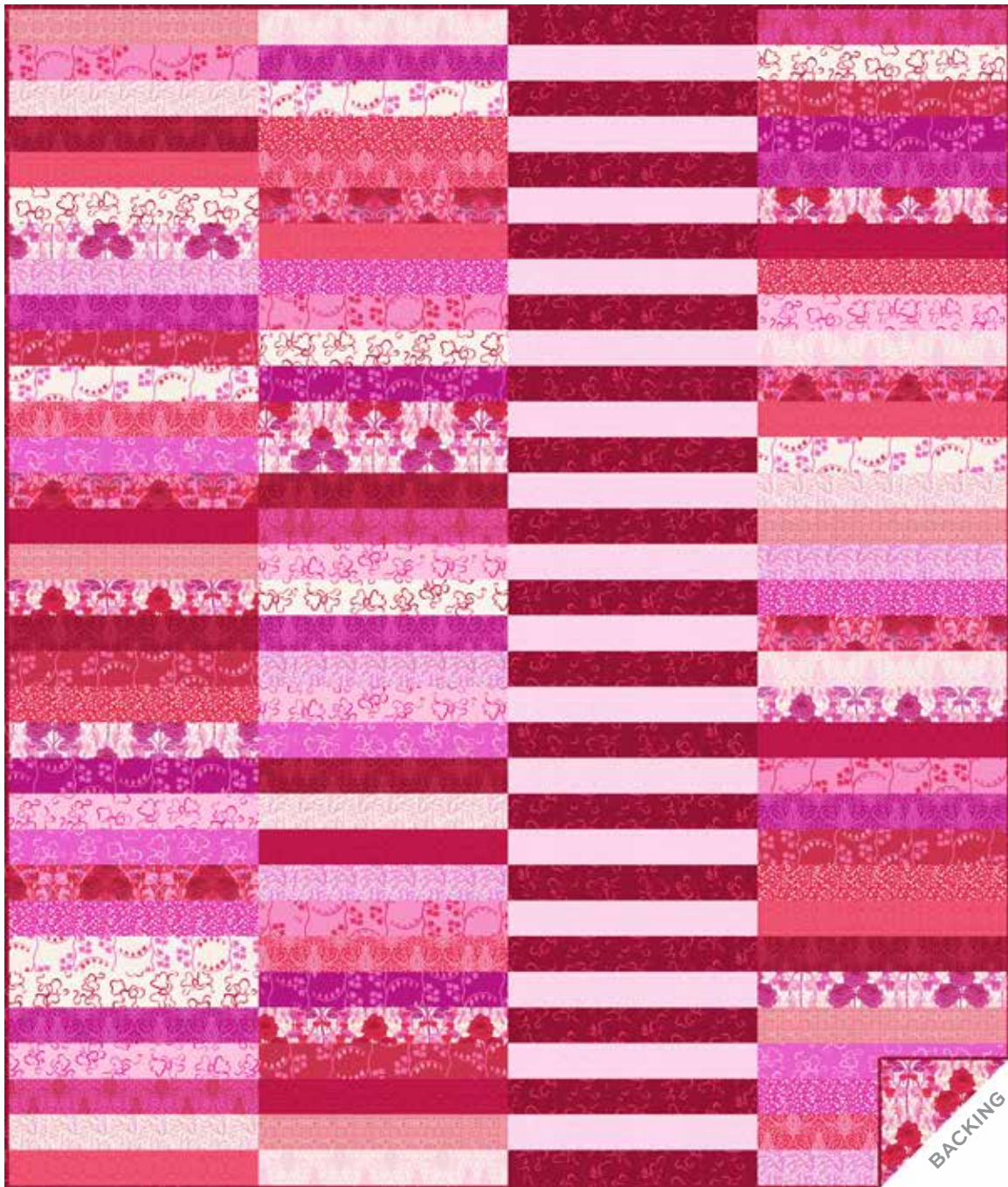


Heart Nouveau

EYE CANDY QUILTS



Buster Quilt designed by: **Eye Candy Quilts**
Quilt Size: **56" x 66"** • Skill Level: **Beginner**

Buster Quilt

Introducing Andover Fabrics new collection: **HEART NOUVEAU** by Eye Candy Quilts

Quilt designed by Eye Candy Quilts

Quilt finishes 56" x 66"

Columns of brightly coordinated floral and heart print rectangles make this lap quilt ideal for a quick project.

It is up to you to decide the arrangement of fabrics to make this uniquely your design.

Fabric Requirements		Yardage	Fabric
2.5" Strip Roll	set		
Fabric A	set	½ yard	1315-LE
Fabric B	set	½ yard	1313-R
Binding		⅝ yard	1313-R
Backing		¾ yards	1310-LR

Cutting Directions

Note: Read assembly directions before cutting patches. All measurements are cut sizes and include ¼" seam allowances. WOF designates the width of fabric from selvedge to selvedge (approximately 42" wide).

Fabric A

Cut (16) strips 2½" x 14½" (Read Step 1 before cutting.)

Fabric B

Cut (17) strips 2½" x 14½"

2.5" Strip Roll From each of 33 strips:

Cut (3) strips 2½" x 14½" (Read Step 1.)

Binding

Cut (7) strips 2½" x WOF for binding

Backing

Cut (2) lengths 38" x 66", pieced to fit quilt top with overlap on all sides

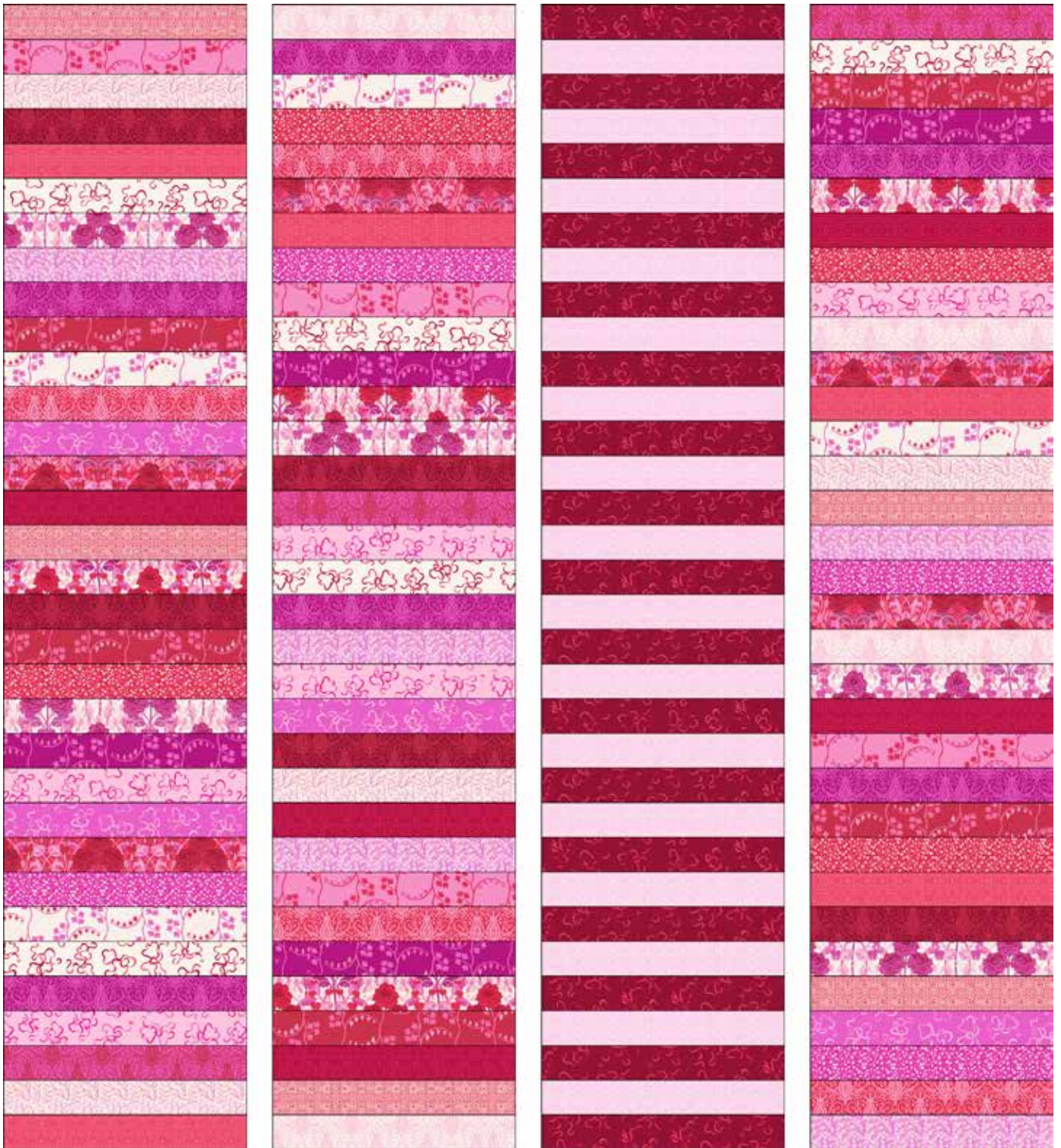
Making the Quilt

1. Choose 33 strips from the Jelly Roll, 2 of some prints, and 1 of others. Each strip of the Jelly Roll is 2½" x WOF. Cut each of the 33 chosen strips into 3 rectangles approximately 14½" long. If the WOF does not allow rectangles to be 14½", then trim off selvedge from both ends of the WOF strips, and cut each strip into thirds, making sure all rectangles are the same length, including Fabric A and B rectangles. Cut a total of 99 rectangles from the Jelly Roll.
2. Referring to the Quilt Assembly, arrange the Jelly Roll rectangles into 3 columns of 33 strips each. Position the Fabric A and B rectangles into a fourth column, alternating fabrics as shown. Stand back to be certain that no fabric touches itself.
3. Once you are satisfied, join the rectangles into columns. Note placement of the Fabric A/B column. Press seam allowances in alternating directions between adjacent columns to allow for the seams to "butt" together when stitching columns. Join the columns side by side to make the quilt top.

Finishing the Quilt

4. Layer the quilt with batting and backing and baste. Quilt in the ditch around patches. Or, quilt an overall pattern. Bind to finish the quilt.

Buster Quilt



Quilt Assembly

Heart Nouveau EYE CANDY QUILTS



1310-E



1310-LR



1310-R



1311-E



1311-L



1311-P



1311-R



1312-E



1312-L



1312-P



1312-R



1313-E



1313-LR



1313-P



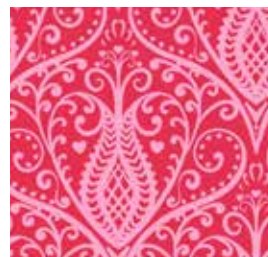
1313-R



1314-E



1314-LE



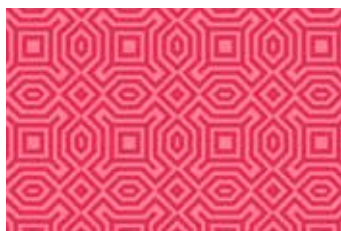
1314-LR



1314-P



1314-R



1315-E



1315-LE



1315-LR



1315-R

All fabrics are used in quilt pattern. Fabrics shown are 50% of actual size.

Free Pattern Download Available

1384 Broadway, 24th Floor, New York, NY 10018

Tel. (800) 223-5678 • andoverfabrics.com